

KEY MAP  
N.T.S.

A PART OF THE ORANGE POINT P.U.D.

# ORANGE POINT - REPLAT NO.1

BEING A REPLAT OF ALL OF TRACTS "B-1" AND "B-2" ACCORDING TO THE PLAT OF ORANGE POINT SECTION 23 AS RECORDED IN PLAT BOOK 79, PAGES 127 THROUGH 132, INCLUSIVE, AND A REPLAT OF ALL OF TRACT "F" ACCORDING TO THE PLAT OF ORANGE POINT PHASE 1 AS RECORDED IN PLAT BOOK 79, PAGES 121 THROUGH 124, INCLUSIVE, BOTH OF THE PUBLIC RECORDS OF PALM BEACH COUNTY, FLORIDA, LYING IN SECTION 23, TOWNSHIP 44 SOUTH, RANGE 41 EAST. VILLAGE OF WELLINGTON, PALM BEACH COUNTY, FLORIDA

SHEET 2 OF 4

DECEMBER, 1996

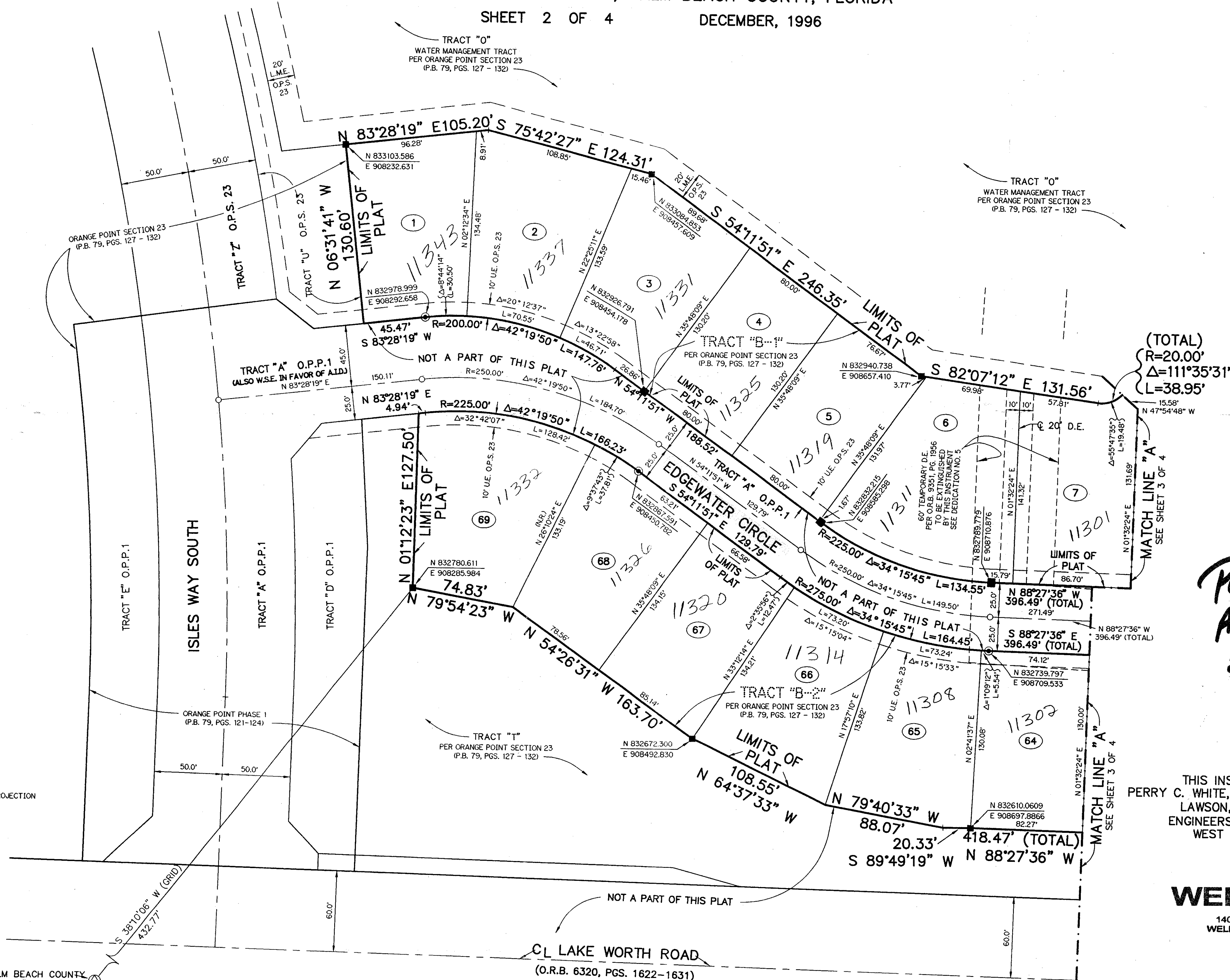
9

LEGEND:

- - FOUND PERMANENT REFERENCE MONUMENT, PLS #5273
- - FOUND PERMANENT CONTROL POINT, PLS #5273
- - PERMANENT REFERENCE MONUMENT, PLS #4215
- - PERMANENT CONTROL POINT, PLS #4215
- Δ - DELTA ANGLE
- A.I.D. - ACME IMPROVEMENT DISTRICT
- B.E. - BUFFER EASEMENT
- C.B. - CHORD BEARING
- C.D. - CHORD DISTANCE
- ☉ - CENTERLINE
- D.E. - DRAINAGE EASEMENT
- L - ARC LENGTH
- L.A.E. - LIMITED ACCESS EASEMENT
- L.M.A.E. - LAKE MAINTENANCE ACCESS EASEMENT
- L.M.E. - LAKE MAINTENANCE EASEMENT
- N.R. - NOT RADIAL
- N.T. - NOT TANGENT
- N.T.S. - NOT TO SCALE
- O.E. - OVERHANG EASEMENT
- O.P.S. 23 - PER ORANGE POINT SECTION 23 (P.B. 79, PGS. 127 - 132)
- O.P.P.1 - PER ORANGE POINT PHASE 1 (P.B. 79, PGS. 121 - 124)
- O.R.B. - OFFICIAL RECORD BOOK
- O.S. - OPEN SPACE
- P.B. - PLAT BOOK
- P.C. - POINT OF CURVATURE
- PGS. - PAGES
- PLS - PROFESSIONAL LAND SURVEYOR
- P.S.M. - PROFESSIONAL SURVEYOR AND MAPPER
- P.T. - POINT OF TANGENCY
- P.U.D. - PLANNED UNIT DEVELOPMENT
- R - RADIUS
- R/W - RIGHT-OF-WAY
- S.T. - SURVEY TIE
- T - TANGENT LENGTH
- U.E. - UTILITY EASEMENT
- W.S.E. - WATER AND SEWER EASEMENT
- N 737648.0171 E 905258.2326 - DENOTES STATE PLANE COORDINATES

NOTE:

COORDINATES SHOWN ARE GRID COORDINATES:  
 DATUM = NAD 83 (1990 ADJUSTMENT)  
 ZONE = FLORIDA EAST ZONE  
 LINEAR UNIT = U.S. SURVEY FEET  
 COORDINATE SYSTEM 1983 STATE PLANE TRANSVERSE MERCATOR PROJECTION  
 ALL DISTANCES ARE GROUND  
 SCALE FACTOR = 1.0000121  
 PLAT BEARING = GRID BEARING (NO ROTATION)



(TOTAL)  
 R=20.00'  
 Δ=111°35'31"  
 L=38.95'

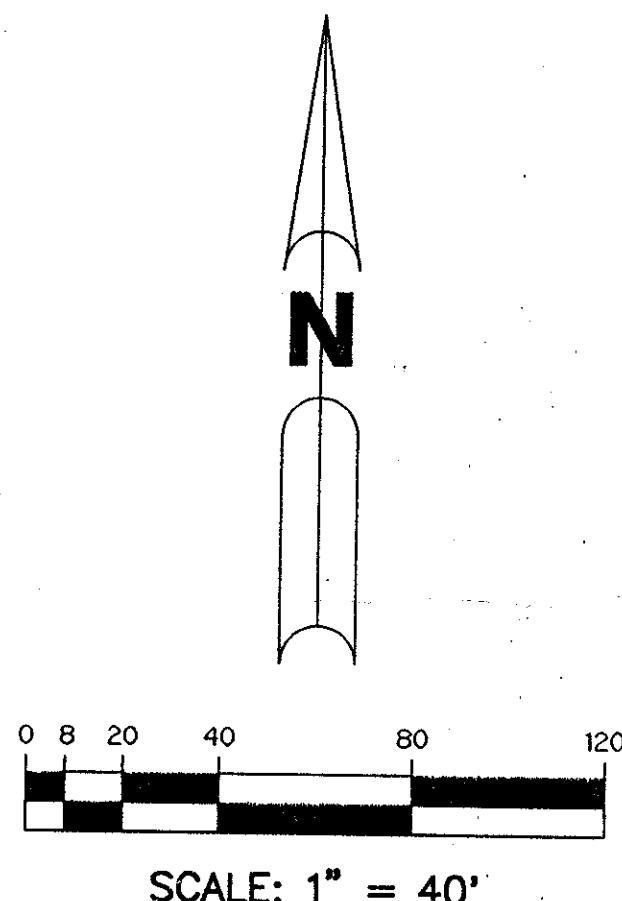
(TOTAL)  
 R=250.00'  
 Δ=42°19'50"  
 L=147.78'

(TOTAL)  
 R=275.00'  
 Δ=34°15'45"  
 L=164.45'

(TOTAL)  
 R=250.00'  
 Δ=34°15'45"  
 L=134.55'

(TOTAL)  
 R=275.00'  
 Δ=34°15'45"  
 L=164.45'

(TOTAL)  
 R=250.00'  
 Δ=34°15'45"  
 L=134.55'



*PET. 84-98  
 A.W.C. #0001  
 5/2/4/G*

THIS INSTRUMENT PREPARED BY  
 PERRY C. WHITE, P.S.M. 4213, STATE OF FLORIDA  
 LAWSON, NOBLE AND WEBB, INC.  
 ENGINEERS PLANNERS SURVEYORS  
 WEST PALM BEACH, FLORIDA

## VILLAGE OF WELLINGTON

14000 GREENBRIAR BLVD.  
 WELLINGTON, FLORIDA 33414  
 (561) 791-4000

FOUND PALM BEACH COUNTY  
 BRASS DISK - SOUTHEAST  
 CORNER OF SECTION 23  
 N 832331.003 E 910693.198

SUBDIVISION #  
 BOOK 80  
 FLOOD ZONE 101B  
 GUAD # 68  
 SE 84-98  
 PUD NAME: VILLAGE OF WELLINGTON

FOUND PALM BEACH COUNTY  
 BRASS DISK - "OW-76"  
 N 832440.367 E 908018.542

*0284-007*

*80/9*